



Scoop



Friday, September 11, 1998

THE UNIVERSITY OF TEXAS - HOUSTON MEDICAL SCHOOL

Calendar Week of September 11-18

11 •Last day for nominations for Alan T. Waterman Award. Call 500-3075.

• **Deadline** for UTMS Fitness Center fall volleyball teams. Call 500-5044.

14-18 Lab Animal Medicine and Care Fall Research Training, Call Danny Sampay, 500-7542.

16 Employee Appreciation Day, lunch provided, Webber Plaza, 11 a.m.-2 p.m.

17 Distinguished Lecture in the Neurosciences by **Dr. Dennis J. Selkoe**, Harvard, "Cell Biology of B-amyloid Precursor Protein and the Genesis of Alzheimer's Disease," 4 p.m., MSB 3.001.

UTmost Interest

Dr. John D. Reveille, the George S. Bruce, Jr. Professor in Arthritis and Other Rheumatic

Diseases, was awarded a new NIH grant for his research with Systemic Lupus Erythematosus.



Hot News

matusus.

HOUSTON LIGHTS A CANDLE FOR CANCER AWARENESS

Join others in solidarity for cancer research funding on **Friday, Sept. 25**, at 6:15 p.m. at The Institute of Religion, 1129 Wilkins St. The local event is on the eve of "The March" in Washington, D.C., Sept. 26, to raise national public awareness. Silvia Castenada, Channel 2, will MC the TMC event, while **Dr. John Mendelsohn**, president of UTMDA, and **Congressman Ken Bentsen** will speak. Friends and supporters are encouraged to bring lawn chairs, enjoy the music and free refreshments at the park at 1100 Holcombe Blvd. and sign a "Spirit Wall." Candles will be lit at 8 p.m. Organizers include M. D. Anderson Cancer Center and the Memorial Hermann Healthcare System. The idea for "The March" germinated on the **Larry King Show**, as cancer survivors talked with the TV host. For further information, call 792-2553.

CARNEGIE FOUNDATION AUTHOR TO VISIT OCT. 4 - 7

Dr. Charles E. Glassick, Senior Associate of the Carnegie Foundation for the Advancement of Teaching and primary author of *Scholarship Assessed: Evaluation of the Professoriate*,

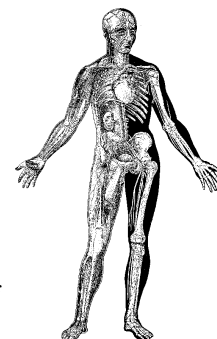
will visit the UT-HHSC October 4-7, 1998 to facilitate campus-wide discussions on assessing scholarship. He is considered an authority in this area. In addition to his keynote presentation, Glassick will also meet with selected faculty groups at different HSC schools to discuss



their specific concerns. Glassick's keynote address to the faculty, "Planning and Assessing Scholarship for Teachers and Clinicians," will be held on Tuesday, **October 6**, 11:45 a.m.-1 p.m., in 3.001. Box lunches will be provided for the first 100 faculty attendees.

PROGRESS REPORTED FOR CROHN'S DISEASE

"Progress has been made in the treatment of Crohn's disease," says **Dr. Alan Buchman**, Associate Professor of Medicine, Division of Gastroenterology, Hepatology and Nutrition. A clinical trial conducted by Buchman with Infliximab, a new drug available in mid-October, decreased the number and size of fistulas significantly. Fistulas are abnormal connections from a patient's intestine to the skin or other organs. Crohn's disease is a chronic illness that causes severe inflammation and ulcers throughout the gastrointestinal tract. This may include the mouth, esophagus, stomach, intestine, colon and rectum. Symptoms may include abdominal pain, bleeding, weight loss, fatigue and arthritis. The disease affects an estimated 750,000 to one million people, women and men, in the United States. About 20 percent are resistant to standard, currently available treatments. In addition, treatment with current medications may be associated with significant side effects. "Infliximab is the first major advancement in the treatment of Crohn's disease in 20 years," **Buchman** added. It is the first product documented in a controlled clinical trial to reduce the number and size of open fistulas significantly. Sixty per cent of those with Crohn's disease will go into remission after treatment.



The actual cause is unknown, although there is a slight genetic risk for the disease and there may be bacterial and environmental triggers as well. These factors lead to the release of a complex cascade of pro-inflammatory and anti-inflammatory substances from white blood cells. Infliximab is a genetically-engineered antibody that blocks the release of tumor necrosis factor alpha (TNF-alpha). Treatment consists of one to three two-hour intravenous infusions of the medication.

Commented **Dr. Stephen Hanauer**, University of Chicago Medical Center, Department of Gastroenterology, and a principal investigator in the clinical trials, "These patients suffer terribly and with Infliximab we physicians now have an important option available to treat them." For those resistant to steroids, the medication has also been shown to be effective. For more information, call **Buchman** at 500-6687, or visit websites at <http://www.centocor.com> or www.ccfa.org. An information hotline is also available at Crohn's and Colitis Foundation of America at 1-800-343-3637.

THE UNIVERSITY OF TEXAS-HOUSTON
HEALTH SCIENCE CENTER



Medical School

L. Maximilian Buja, M.D., Dean
Bryant Boutwell, Dr.P.H., Assistant Dean
Colleen O'Brien, Editor

e-mail: cobrien@dean.med.uth.tmc.edu

FAX: (713) 500-0597

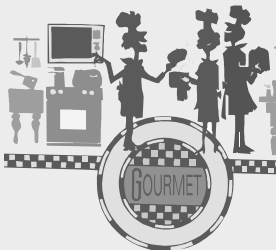
E-Scoop online: <http://www.med.uth.tmc.edu>



Produced weekly by the Office of Community
Affairs and Public Education

SERVICE SPOTLIGHT**ORGANIZATION OF FACULTY WIVES AND WOMEN FACULTY PLAN COOKBOOK**

The Organization of Faculty Wives and Women Faculty is beginning a new year with **Mary Stancel** as president, **Cathy Weisbrodt**, president-elect, **JoEllen Gilstrap**, vice president, and **Susan Byrne**, treasurer. The group will hold its annual coffee and luncheon on **Sept. 19** in the **Gilstrap** home.



A **November 6** Pot Luck Dinner will kickoff the group's cookbook project. For information about these events call Mary Stancel at (713) 729-5803. Recipes will be collected beginning in October, and the book will be published in the fall of 1999. Proceeds will be used to support medical school student projects. Working on the cookbook with the officers are **Judy Fred**, **Carol Milam**, **Donna Buja** and **Annette Santamaria**. If you have a recipe to submit for consideration, get it ready. Forms will be available soon and *Scoop* will keep you in the know.

RESEARCH DESIGN COURSE BEGINS SEPTEMBER 16

The University Clinical Research Center (UCRC) will offer its third annual Research Design Course to train clinical fellows and young investigators in methods of clinical research. **Dr. Chul Ahn** is director of the classes open to anyone (residents, staff, faculty and lab technicians), who can attend one or all. Presentations will be held on eight consecutive Wednesdays from 5 - 6 p.m. beginning **September 16**. For information/reservations, call **Ann Ince**, (713) 704-4269 or **Sherry Reed**, (713) 704-3843.

CLINICAL RESEARCH DESIGN COURSE - 1998**Date, Title and Presenter:****Wednesday, 9/16**

Introduction and Research Resources at UT-H
MSB 2.103, **Keith Hoots, M.D.**, **Philip Johnson, M.D.**,
Ann Ince, Admin.Mgr., UCRC

Wednesday, 9/23

Outcomes Research
MSB 2.103, **John Ribble, M.D.**, **Carl Slater, M.D.**

Wednesday, 9/30

Introduction to Evidence-Based Medicine
MSB 2.103, **Virginia Moyer, M.D.**

Evidence-Based Medicine, (just added to the course curriculum), is the conscientious, explicit and judicious use of current best evidence in making decisions about the care of individual patients. It is for busy clinicians who devote their scarce reading time to selective, efficient, patient-driven searching, appraisal and incorporation of the best available evidence. It is not 'cook-book' medicine; it requires a bottom-up approach that integrates the best external evidence with individual clinical expertise. The practice of EBM is a process of life-long, self-directed learning in which caring for our own patients creates the need for clinically important information about diagnosis, prognosis, therapy and other clinical and health care issues. (From: *Evidence-Based Medicine: How To Practice And Teach EBM*).

**Wednesday, 10/7**

Study Designs I
MSB 2.135, **Chul Ahn, Ph.D.**

Wednesday, 10/14

Study Designs II
MSB 2.103, **Chul Ahn, Ph.D.**

Wednesday, 10/21

Study Designs III
MSB 2.103, **Chul Ahn, Ph.D.**

Wednesday, 10/28

Data Collection and Management Knowledge
MSB 2.103, **Charles Forbes**

Wednesday, 11/4

Ethical Issues in Clinical Research
MSB 2.135, **Paula Knudson**